



**NATURE  
CONSERVATION  
RESEARCH CENTRE**  
*Conserving the Environment;  
Developing Communities.*



**FOREST  
TRENDS**

**the  
katoomba  
group**

## **Community-based regulation of charcoal in Ghana's transition zone.**

By: Victor M. Mombu  
October 2009

1 bag charcoal = 40kg

**One day:** 15 trucks X 300bags/truck X 40kg = 180 tonnes

**Yearly** = 65,700 tonnes (14% wood used)

**Total wood used** = 469,286 tonnes (80% of total biomass)

Total biomass = 586,607 tonnes

Total emissions = 1m tCO<sub>2</sub>

\$4 VCM = \$4.3m = 155 Prim Schools

# Introduction

- Charcoal is the preferred domestic fuel in Ghana
- 90% of urban households use charcoal for cooking
- supports most informal enterprises – blacksmithing, BBQ, roasted foods.
- Wood for charcoal production is taken from the wild forest.



# Why charcoal ?

- Burns hotter
- Burns without smoke
- Stores longer without degradation.
- Can be purchased in smaller units
- Consistent with local appliances



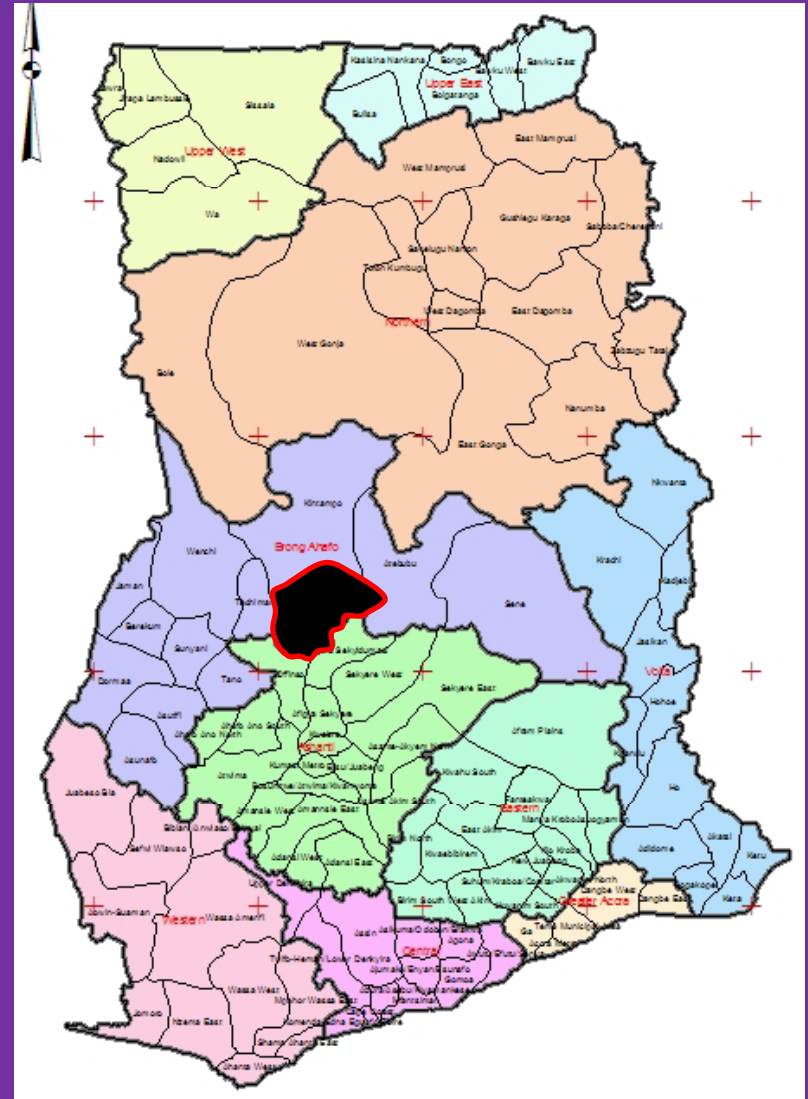
Units of charcoal on sale



Local coal pot & frying pan

# Scale of Project

- Location in Nkoranza North District.
- Total area of 23,000km<sup>2</sup>
- Total population = 140,000
- Initial 20 communities
- 2,000 km<sup>2</sup>
- 200 charcoal producers



# Three Key Stages

Formation of Charcoal Management Board

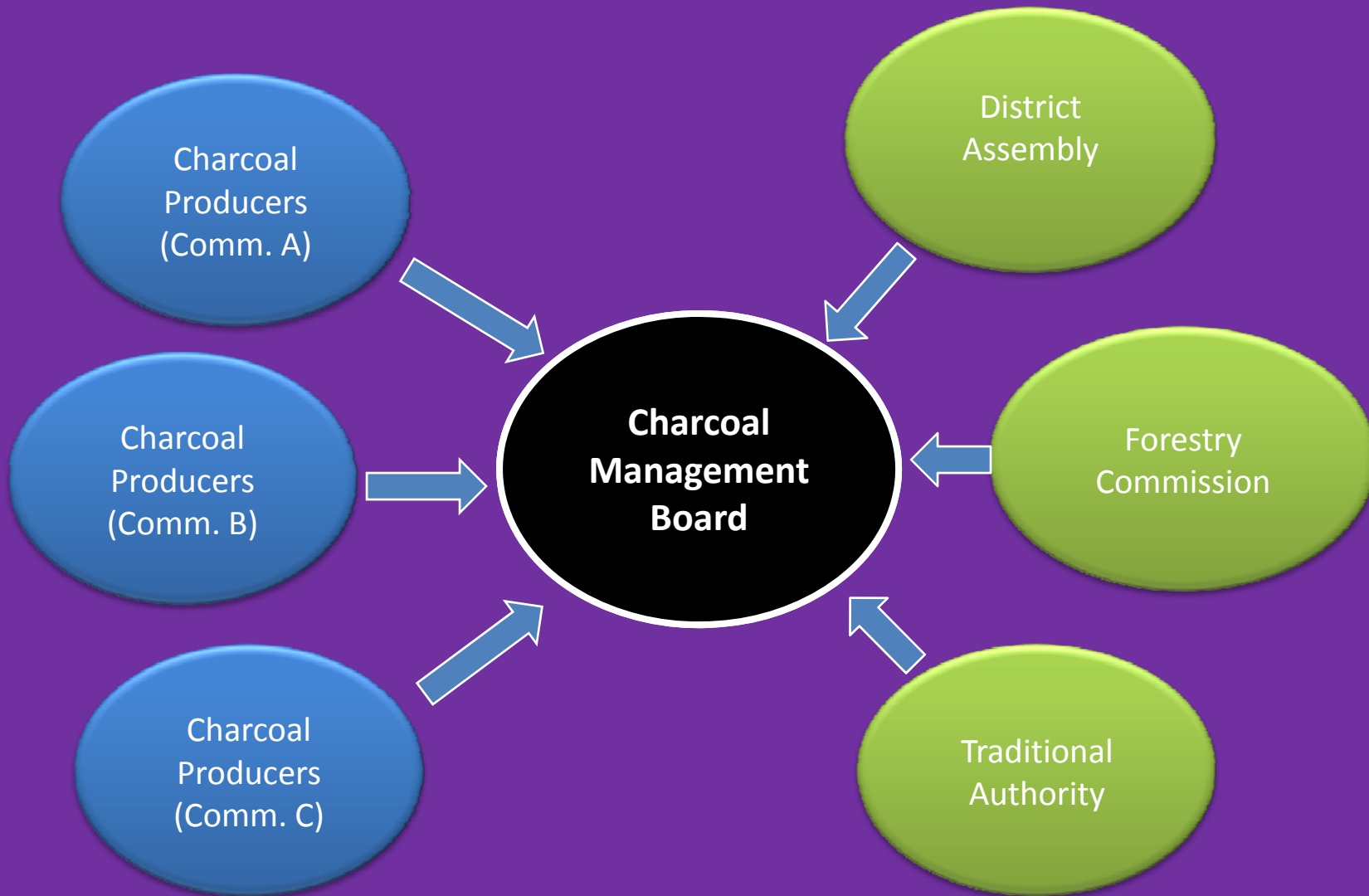
Local capacity building to manage community forests

Develop PES mechanism based on sustainable charcoal

- carbon finance
- charcoal tourism



# Proposed structure of the charcoal MB



# Advances to date



**Producers**



**Roadside sellers**



**Truck dealers**



**Market women**

Stakeholder and economic linkage analysis

# Advances to date

- Initial engagement of Traditional Authority and District Assembly
- Scoping study of carbon finance options from



Village	No. of bags of charcoal	Wt. in Kg	tCO <sub>2</sub>	Potential revenue from C offsets VCM @ \$4 per ton of CO <sub>2</sub>
Bontin	34,858	1,673,191	15,059	\$60,235
Bomini	56,173	2,696,309	24,267	\$97,067

# Potential challenges

- Achieving common agreements among charcoal producers
- Managing wild fires
- Managing migratory alien cattle



Thank You!